



Content

1. About US

2. Basic Principles

3. Types of Discounting Switches

3.1 DS Type VRV (HCB)

3.2 DS Type PRV (Pantograph)

3.3 DS/DSE Type LRV (Vertical)

I. About Us



With more than 40 years of experience in Power Transmission and Distribution (T&D), we are Pioneer in many areas. Engineering, Procurement and Construction (E.P.C), Power Quality and Manufacturing of HV, MV and LV Equipment and Apparatus are among the areas that we have been recognized for our crucial influence and works.



Today, thanks to years of experience and latest developed technology and unique equipment, we provide our customers with variety of products in the highest level of quality and technology.

We do strongly believe that, based on the organization Values and Vision, the door of opportunity to participate effectively in industrial domain is open for us.

We are especially interested in those areas, which attend the real need of customers and ultimately affect mostly our society.

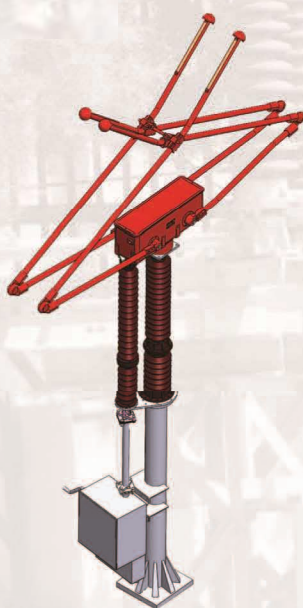
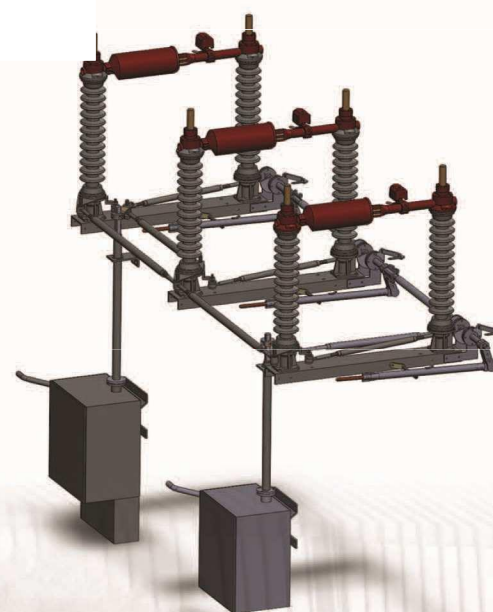
We consider Quality not as a choice, but as a Prerequisite. Without Quality, no business will be carried out by us.



We currently manufacture and supply horizontal (VRV) and vertical (LRV) isolators from 72.5 kV up to 420 kV and also 245 kV & 420 kV pantographs isolators.

Basic Principles:

- Use of special aluminum and copper alloy for more efficient contact system
- Reliable electrical and mechanical interlock system
- Maximum assembly allowance in the Factory
- More efficient maintenance and installation



DS Type VRV (HCB)

Description

VRV Isolators with horizontal opening and closing (HCB type) are design for outdoor mounting. These kinds of isolators are supplied from 36 kV up to 420 kV. If supplied with earth blades, isolator will have two drives installed, one for operating the main contact blades and other for earth blades, which are mechanically and electrically interlocked preventing thus the incorrect handling operation.



Manual Drive Type (RTP-1)



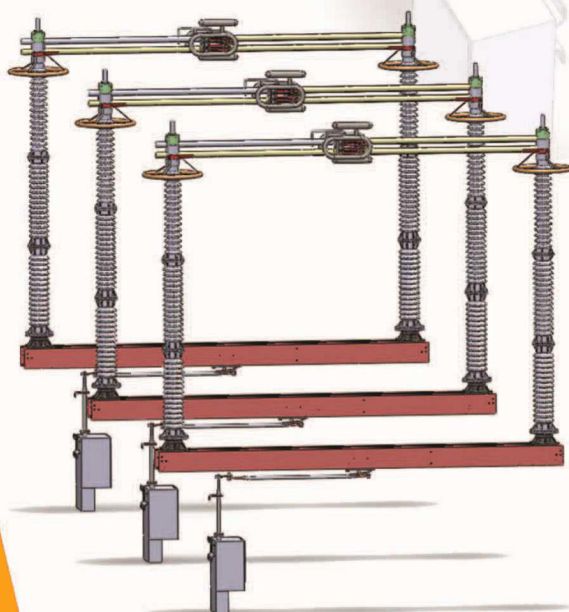
Motorized Drive Type (DF-2)

Type	Rated Voltage kV	Rated current A	Short Time withstand current kA/Sec	Short Circuit Making current kArms	Operating mechanism	
					Main blades	Earthing blades
VRV-7 F	36	1250	31.5/3	80	DF-2, RTP-1	DF-2, RTP-1
H		2000				
VRV-9 F	72.5	1250	31.5/3	80	DF-2, RTP-1	DF-2, RTP-1
H		2000	40/1	100		
S		3150	50/1	125		
VRV-12 F	145	1250	31.5/3	80	DF-2, RTP-1	DF-2, RTP-1
H		2000	40/1	100		
S		3150	50/1	125		
VRV-14 F	245	1250	31.5/3	80	DF-2, RTP-1	DF-2, RTP-1
H		2000	40/1	100		
S		3150	50/1	125		
VRV-16 H	420	2000	40/1	100	DF-2, RTP-1	DF-2, RTP-1
S		3150	50/1	125		



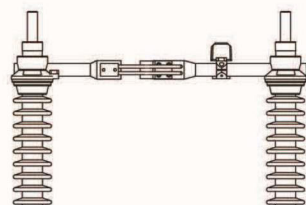
The main contact points are made of hard electrolytic copper partially silver plated.

Mechanical lock which prevents axial opening of the blades is put on contact system of VRV14 & VRV16.

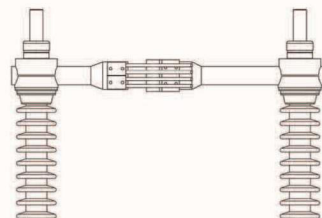


VRV 16 (420 kV , 3150 A)

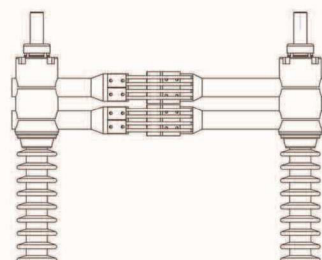
1250 A



2000 A



3150 A



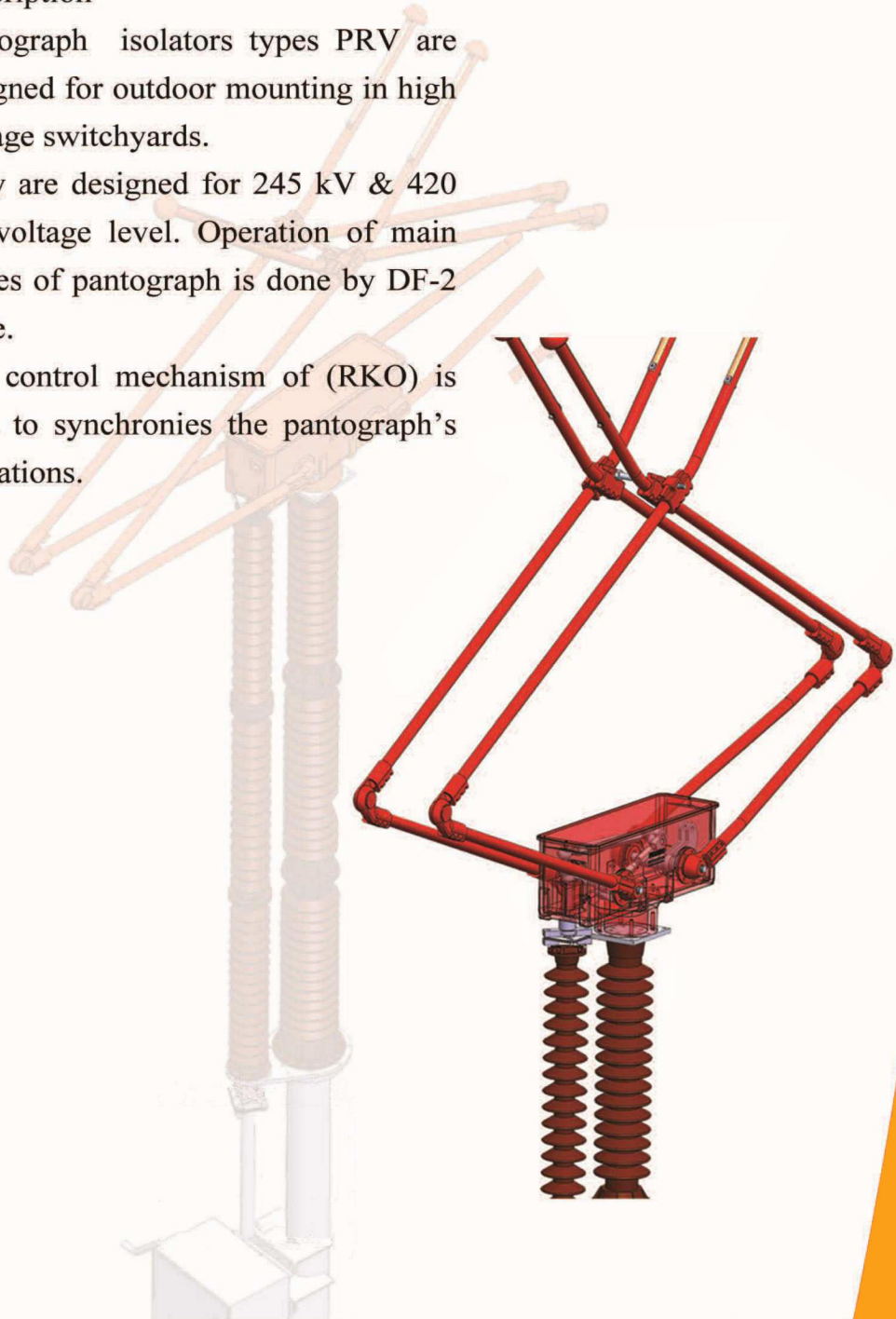
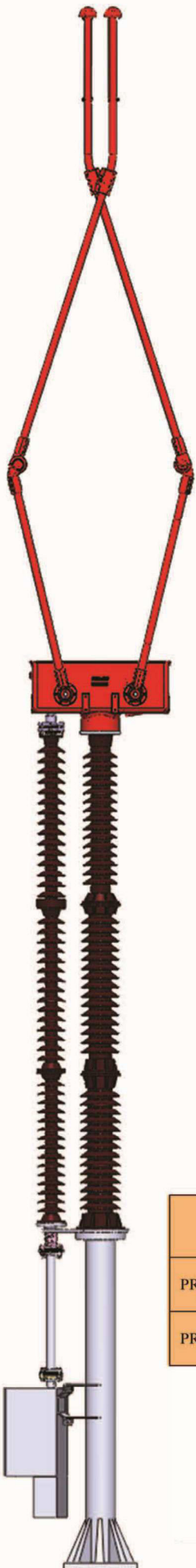
DS Type PRV (Pontograph)

Description

Pantograph isolators types PRV are designed for outdoor mounting in high voltage switchyards.

They are designed for 245 kV & 420 kV voltage level. Operation of main blades of pantograph is done by DF-2 drive.

The control mechanism of (RKO) is used to synchronise the pantograph's operations.



Type		Rated Voltage kV	Rated current A	Short Time withstand current kA/Sec	Short Circuit Making current kArms	Operating mechanism
						Main blades
PRV-14	H	245	2000	40/1	100	DF-2
	S		3150	50/1	125	
PRV-16	H	420	2000	40/1	100	DF-2
	S		3150	50/1	125	

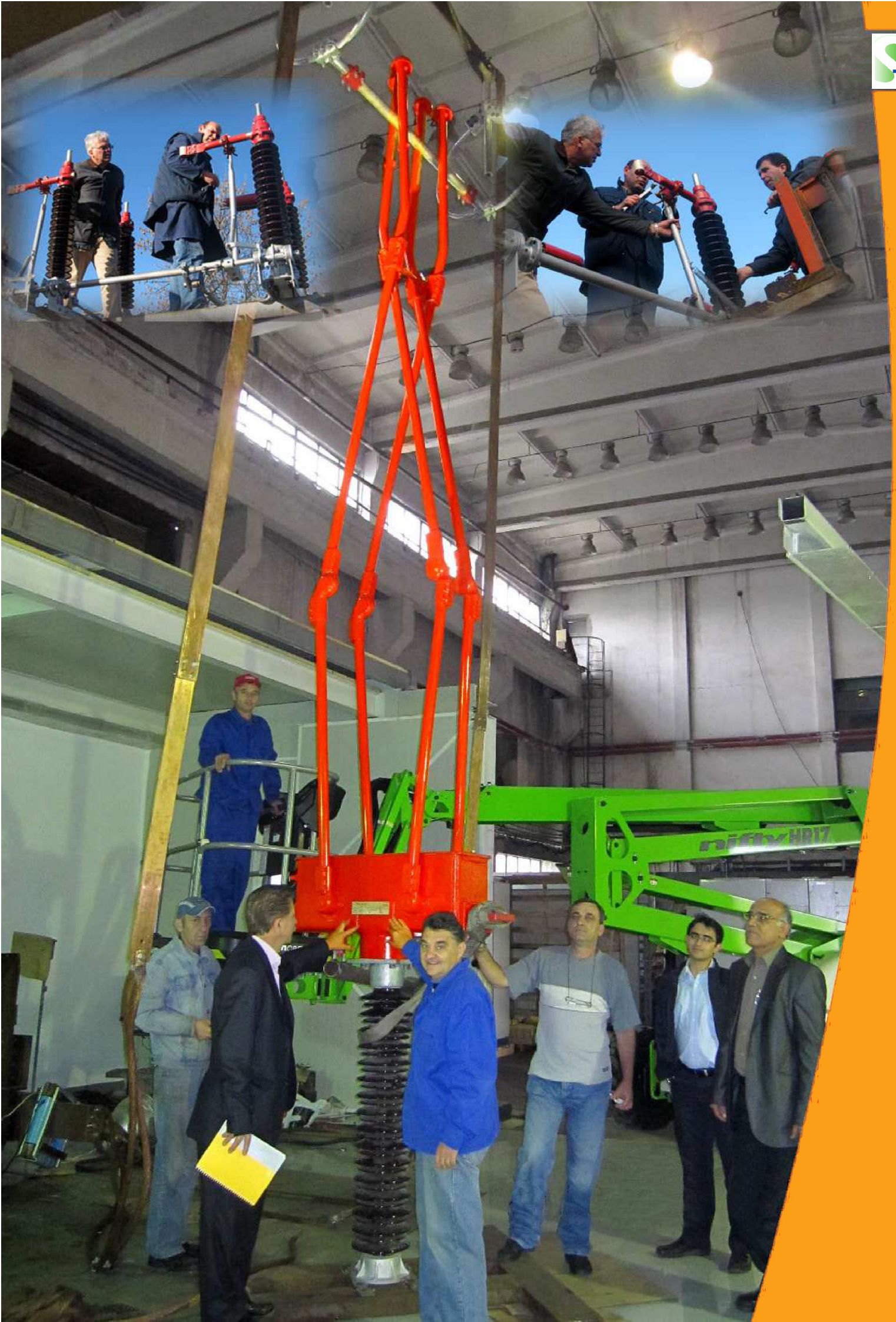
DS/DSE Type LRV (Vertical)

The isolators type LRV, with vertical opening and closing are designed for outdoor installation. This type of isolator consists of two post insulators, one rotary insulator, coupling levers housing, operating mechanism and chassis.

This type of isolator is intended for rated voltage of 245 and 420 kV and rated currents of 2000 up to 3150 A.



Type	Rated Voltage kV	Rated current A	Short Time with stand current kA/Sec	Short Circuit Making current kArms	Drive	
					Earthing blades	Main blades
LRV-14	245	2000	40/1	100	DF-2	DF-2, RTP-1
		3150	50/1	125		
LRV-16	420	2000	40/1	100	DF-2	DF-2, RTP-1
		3150	50/1	125		





Soreltek

SORELTEK S.A, Rue De La
Grosse Tour, 181050 Ixelles -
Belgique N° d'enregistrement
0885917529

Téléphone : +3226404675

Email : info@soreltek.com